

HowTo Install and Configure DHCP

Objective – Install DHCP and create a new scope. If a default gateway is in use, include it in the Scope Options.

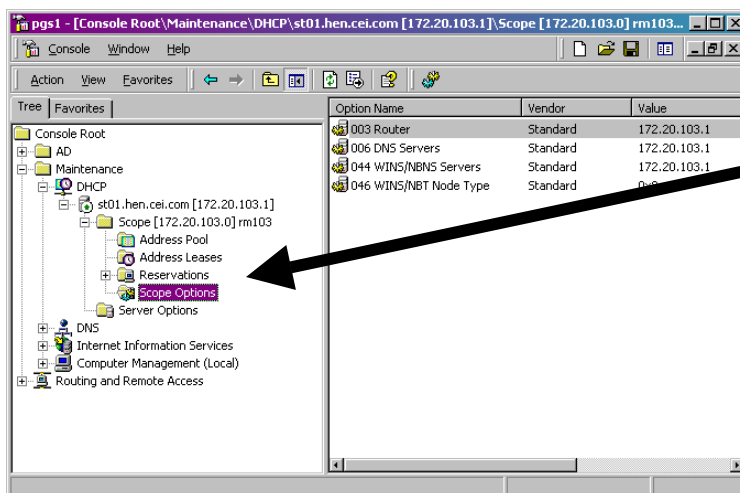
To install DHCP

1. From Start menu, click Settings | Control Panel.
2. In Control Panel, double click Add/Remove Programs.
3. Click Add/Remove Windows Components.
4. In the Components list, select Networking Services and click Details.
5. Click the Dynamic Host Configuration Protocol (DHCP) check box and then OK.
6. In the Windows Component page, click Next.
7. When the Completing The Windows Component Wizard page appears, click Finish.
8. In the Add/Remove Programs dialog box, click Close.
9. Close the Control Panel Window.

To create a new scope

1. From Start Menu, trace to Programs | Administrative Tools and click DHCP.
2. In the DHCP administrative console, right click the specific server and select New Scope.
3. Click Next.
4. In the Name text box, type a descriptive name and click Next.
5. Type the start and end IP addresses, using your pre-determined IP address pool.
6. Click Next.
7. Add exclusions if necessary and click Next.
8. Set the Lease Duration per your specifications.
9. Select Yes, I Want To Configure These Options Now option button.
10. Provide a Router (Default Gateway) and click Next.
11. When the Domain Name and DNS Server pages appear click Next.
12. When the WINS Server page appears, click Next.
13. In the Activate Scope page, select Yes and click Next.
14. Click Finish.

P
r
o
t
o
t
y
p
e



Click here for
Scope Options